



Setting Up A Pre-Existing iPad

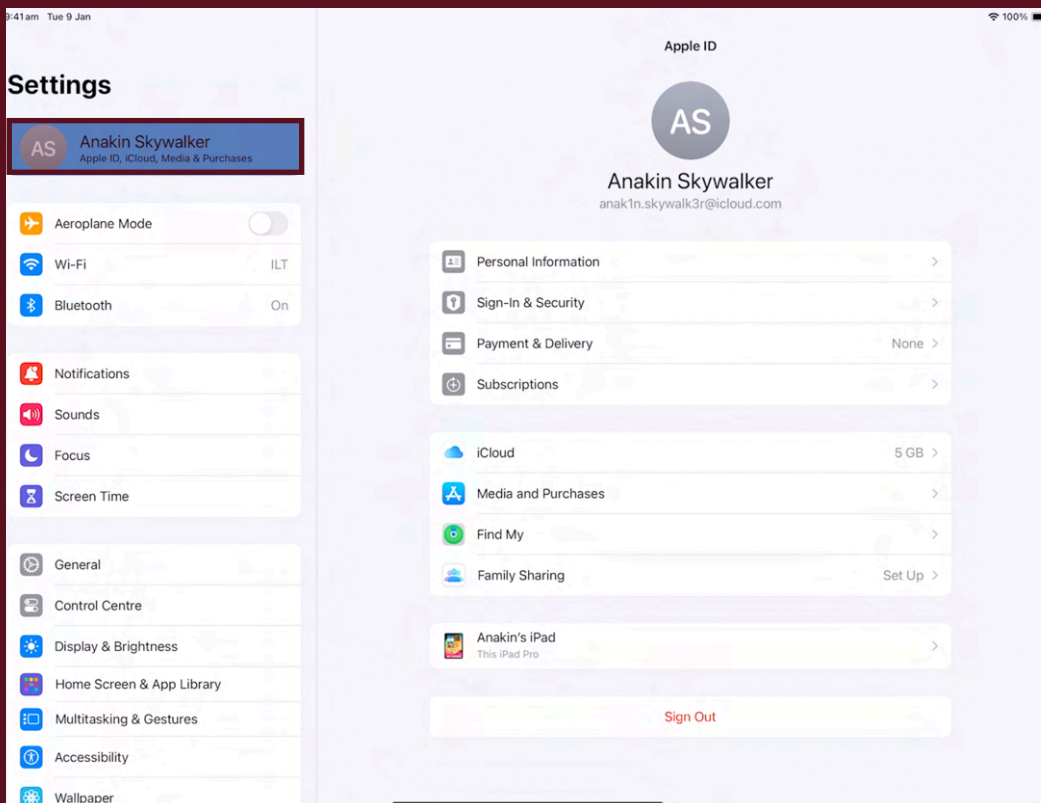


Setting Up Your iPad

1. From the Home Screen, open the “Settings” app.

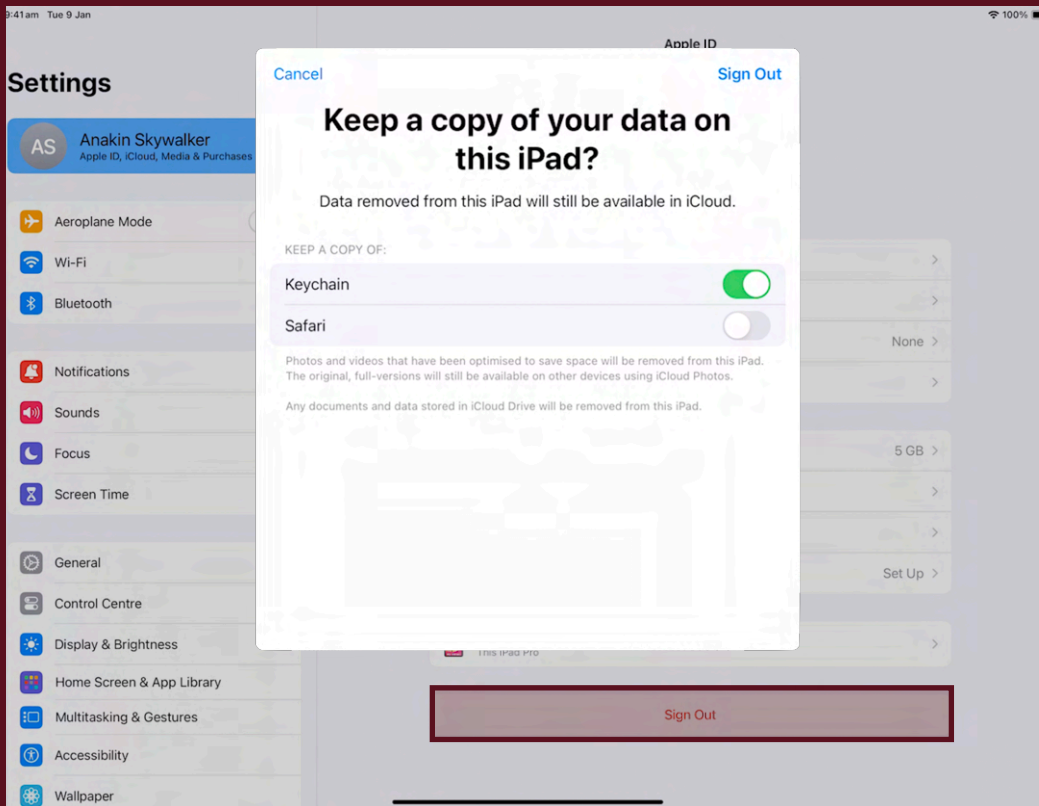


2. Tap your name at the top of the screen. If you see “Sign into your iPad”, skip to step 4.

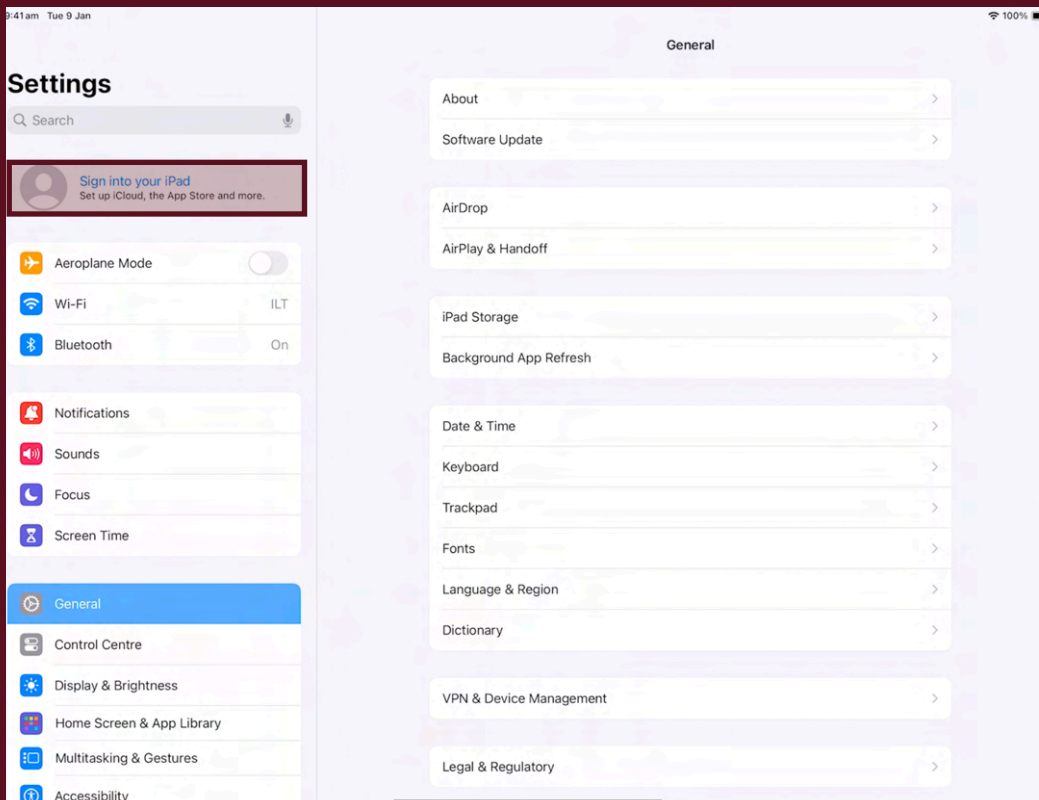


Setting Up Your iPad

3. Tap “Sign Out”, then switch on all the data you want backed up to the device and press “Sign Out”.

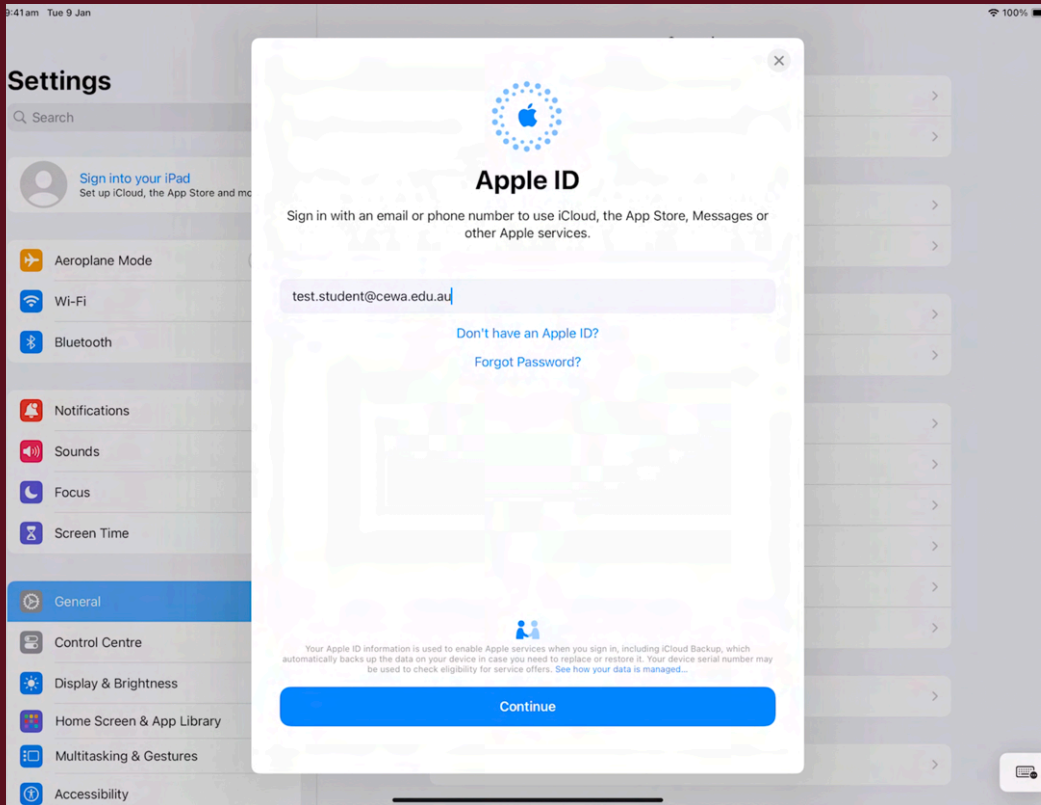


4. Tap “Sign into your iPad”.

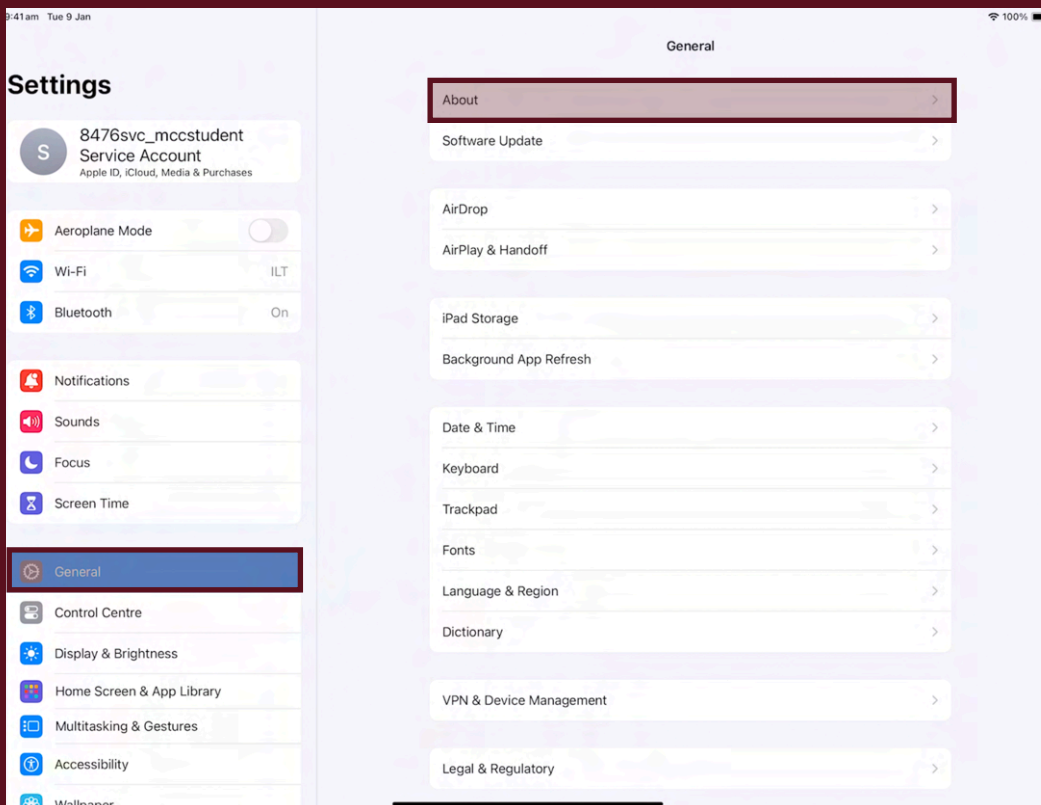


Setting Up Your iPad

5. Sign in with your CEWA email and password.

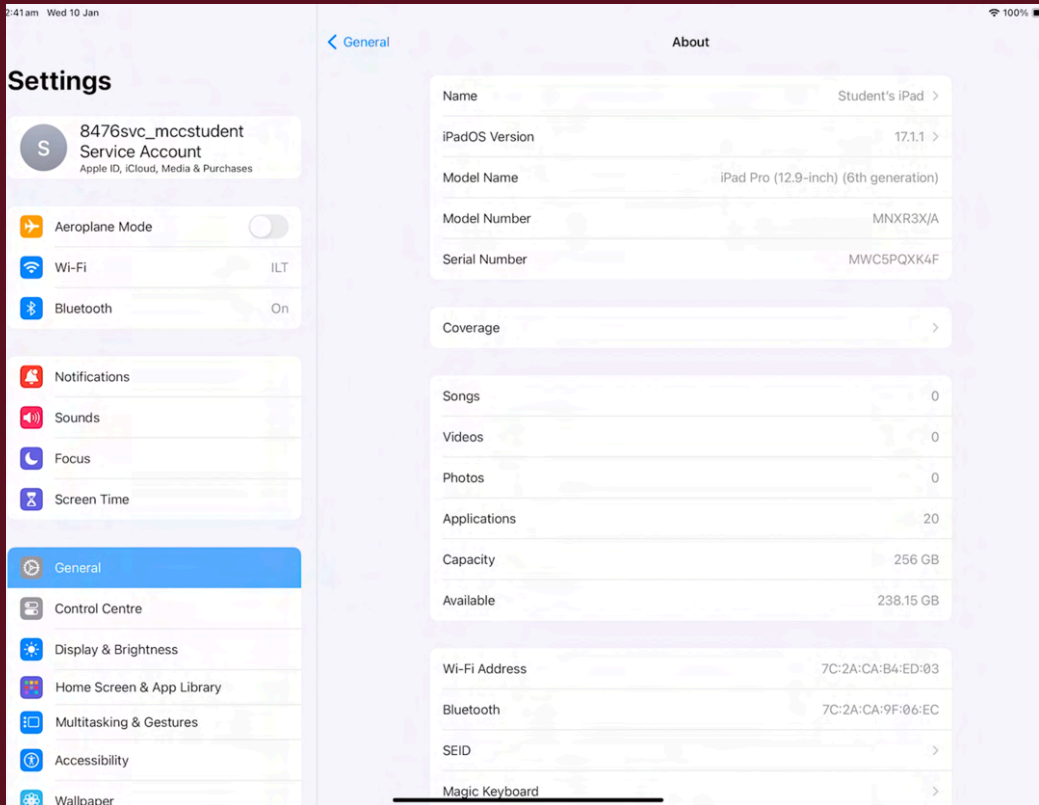


6. Tap “General”, then “About”

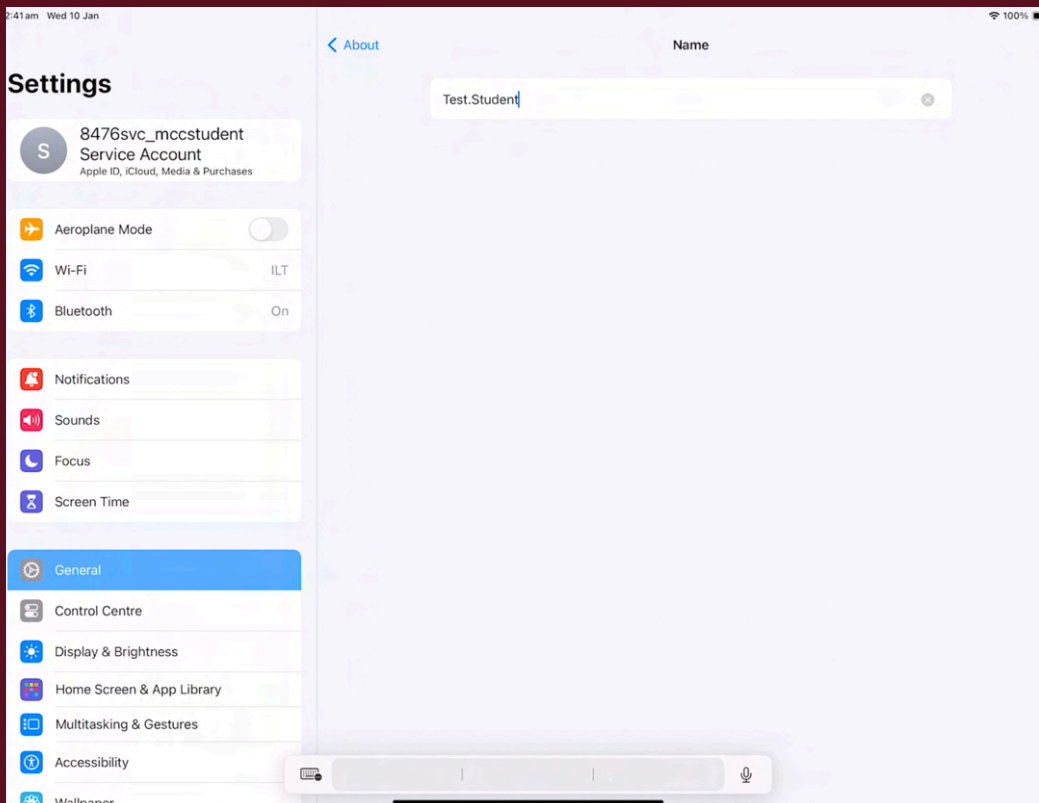


Setting Up Your iPad

7. Tap “Name”

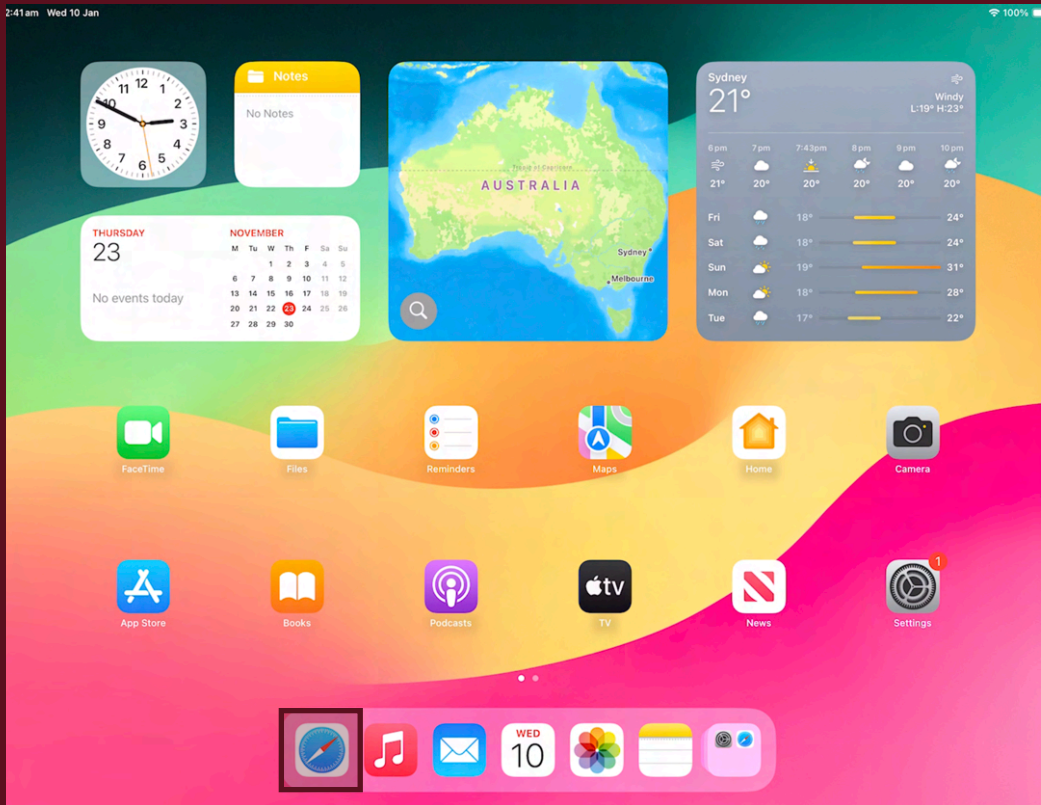


8. Change the iPad name using the following naming convention: **FirstName.LastName**. This is required to identify the device on our systems and to help track the iPad should it be lost.

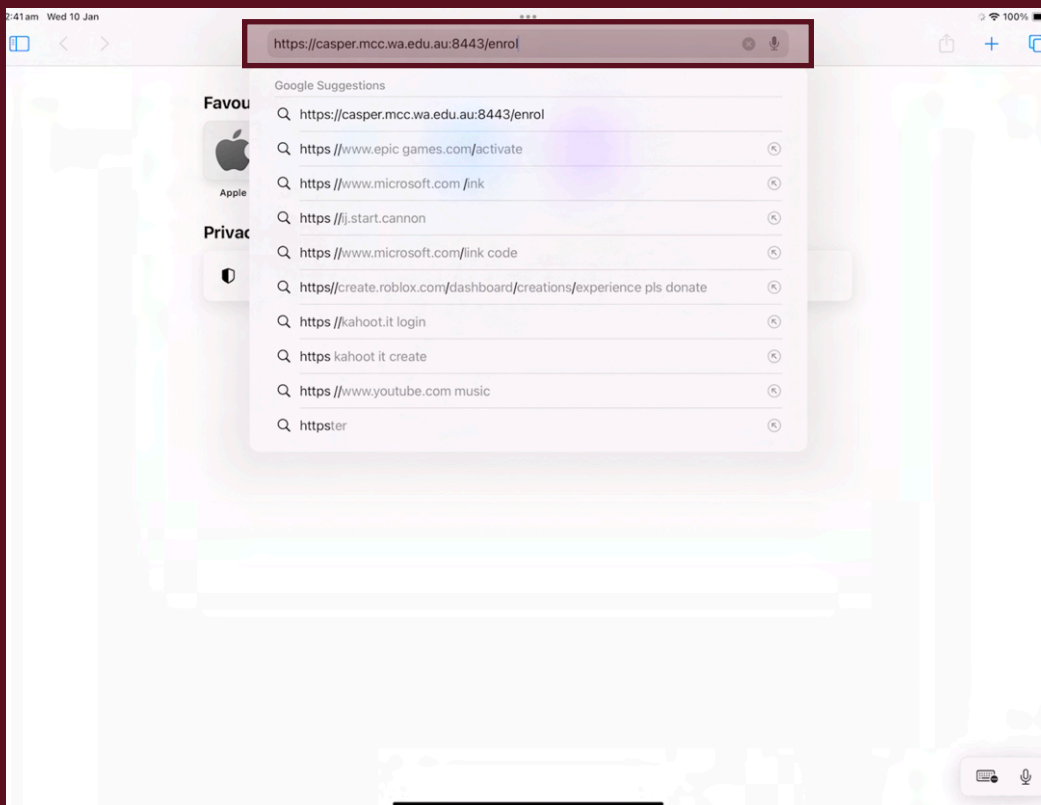


Setting Up Your iPad

9. Return back to the home screen and then open the “Safari” app.

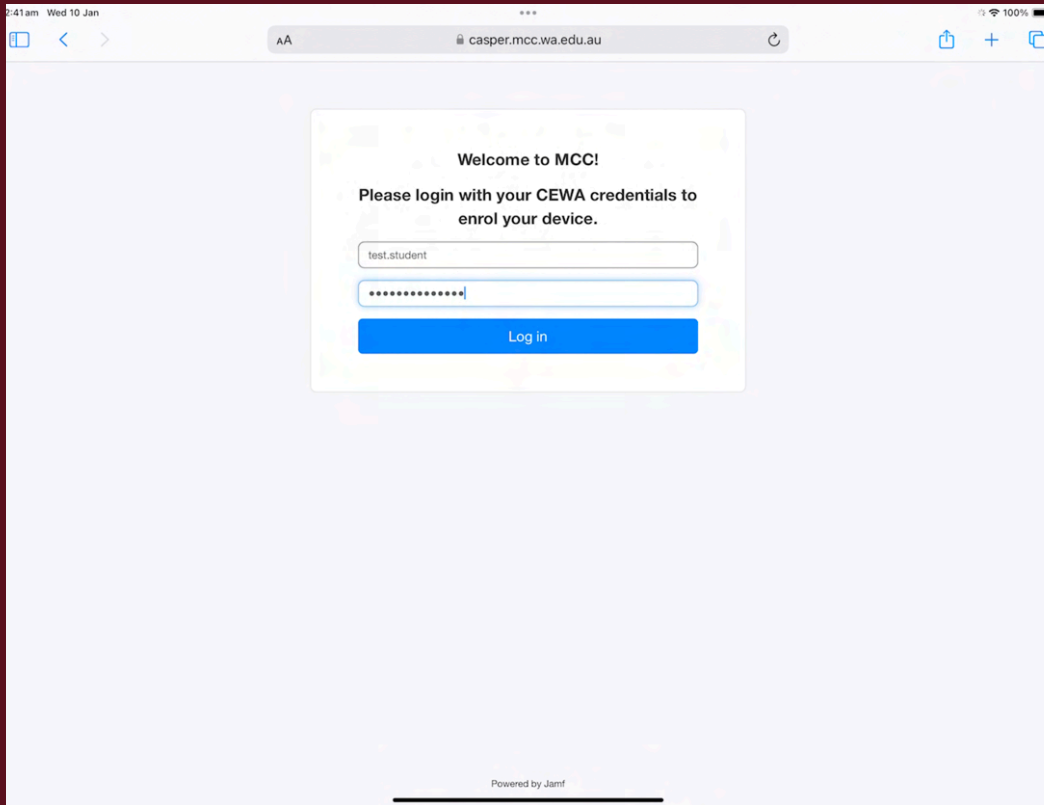


10. Enter the following URL into the address bar: <https://casper.mcc.wa.edu.au:8443/enrol>

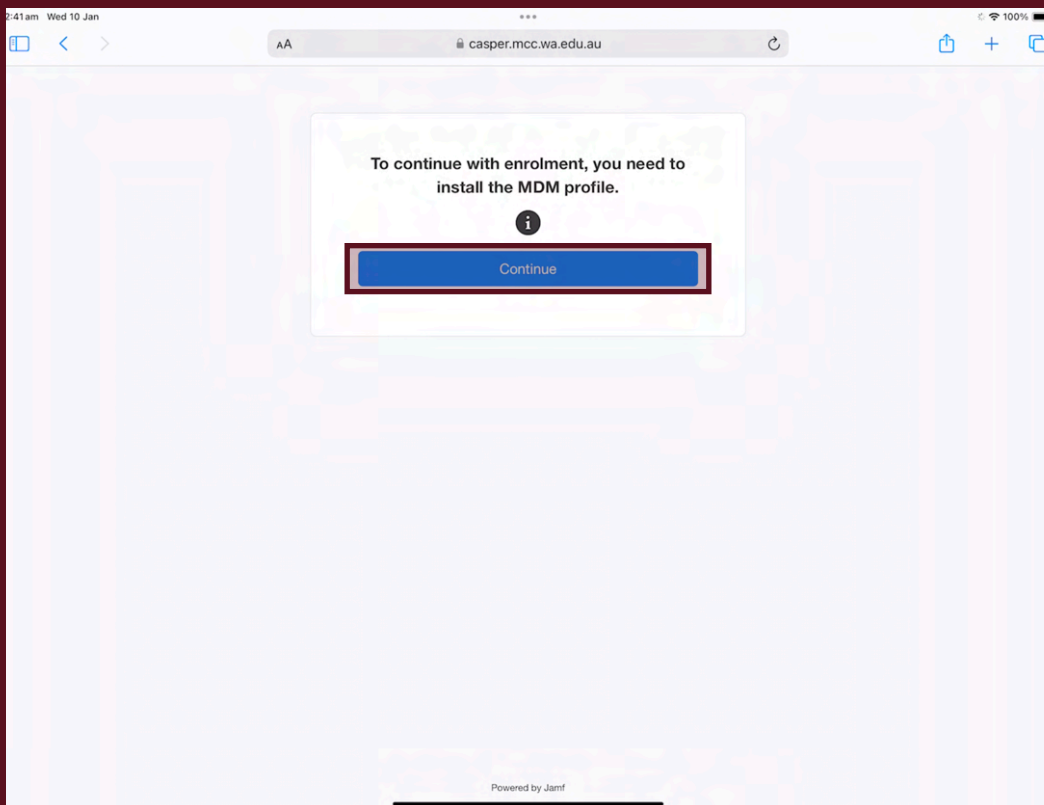


Setting Up Your iPad

11. Login using your student credentials.

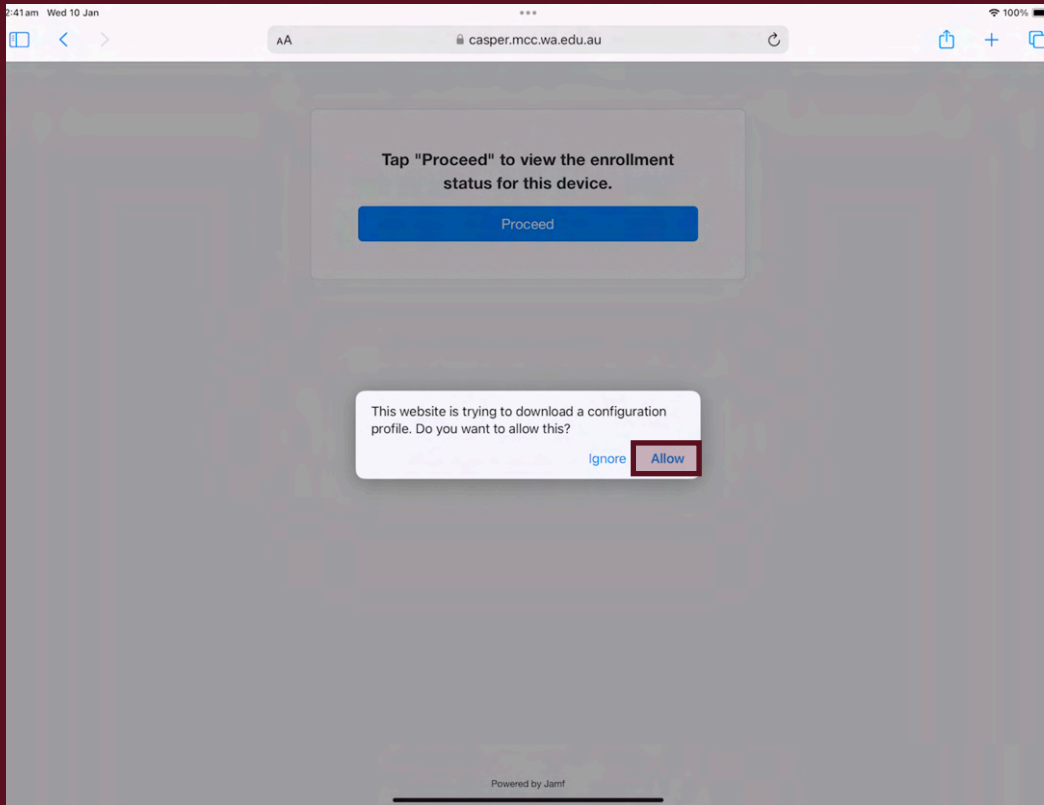


12. Tap "Continue"

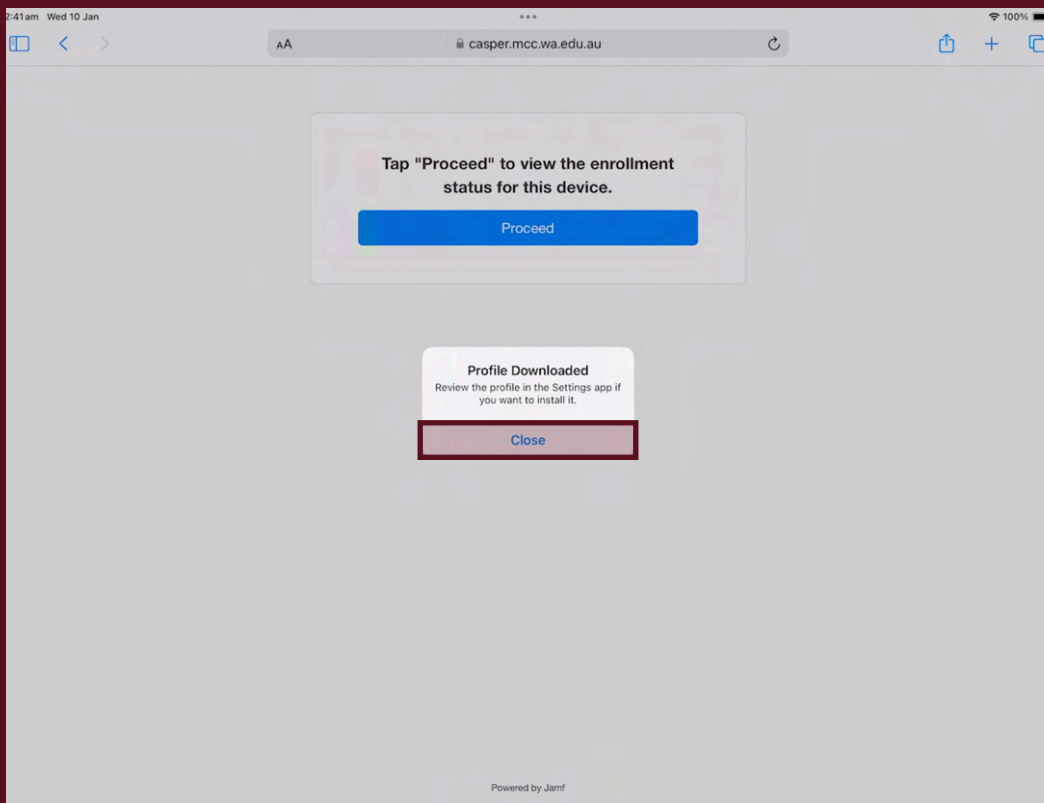


Setting Up Your iPad

13. Tap "Allow"

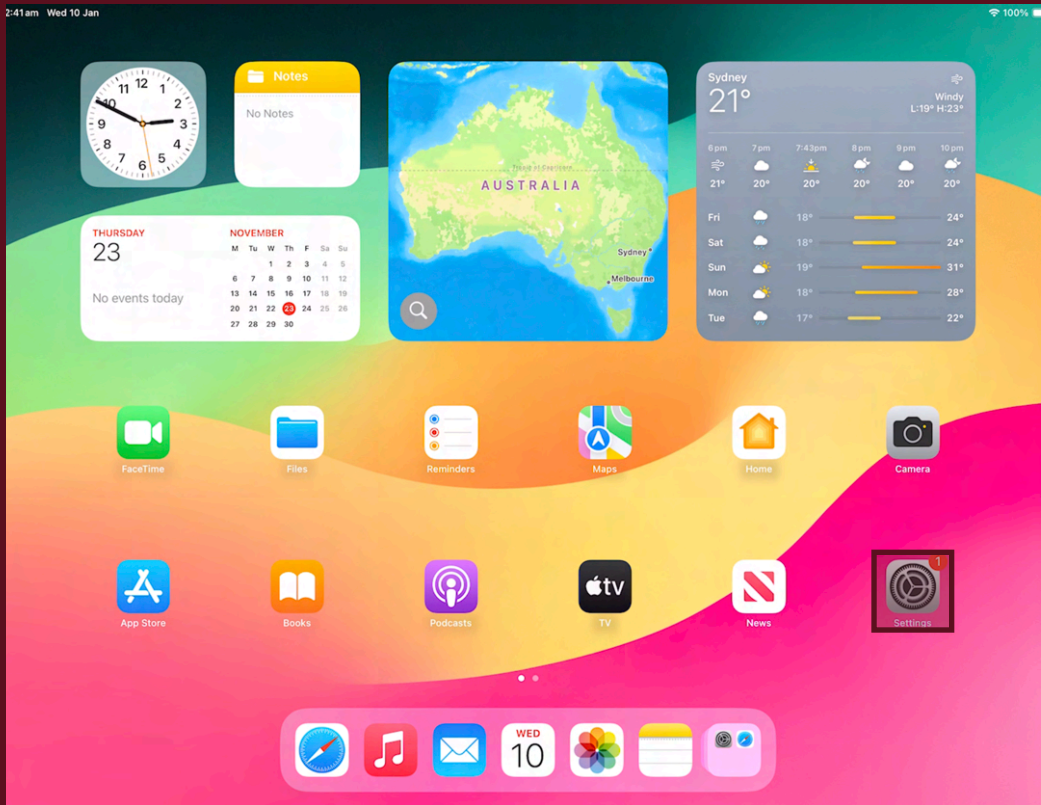


14. Tap "Close"

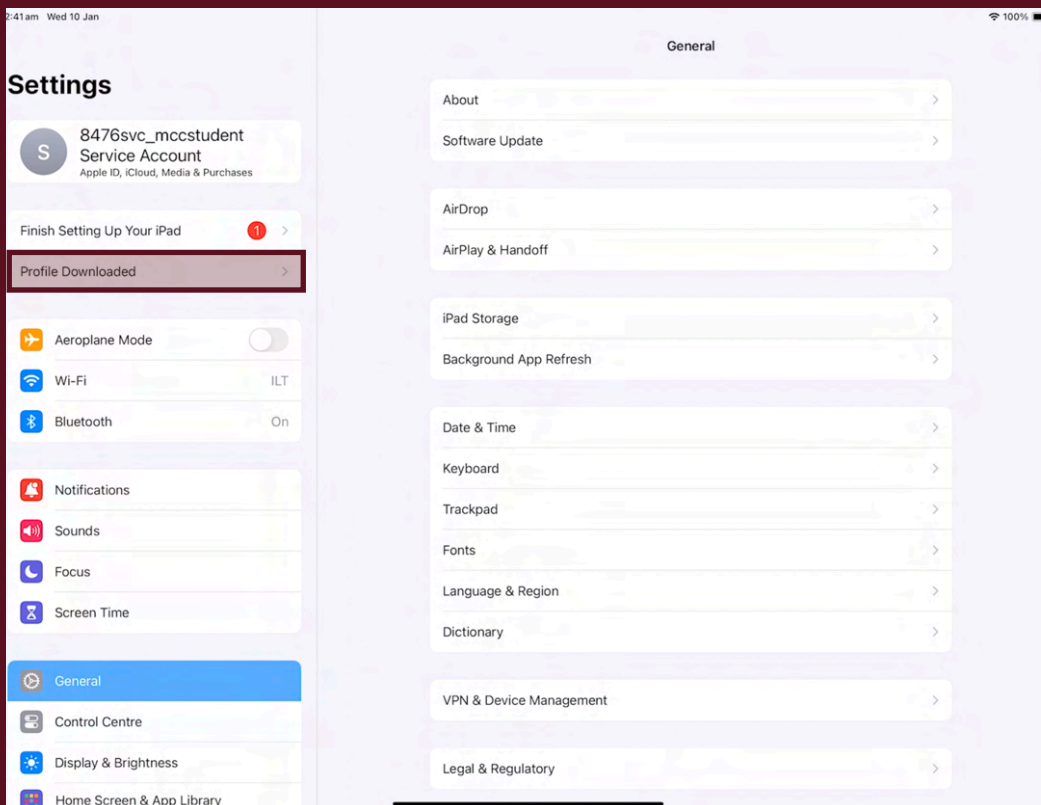


Setting Up Your iPad

15. Return to the Home Screen and open “Settings”.

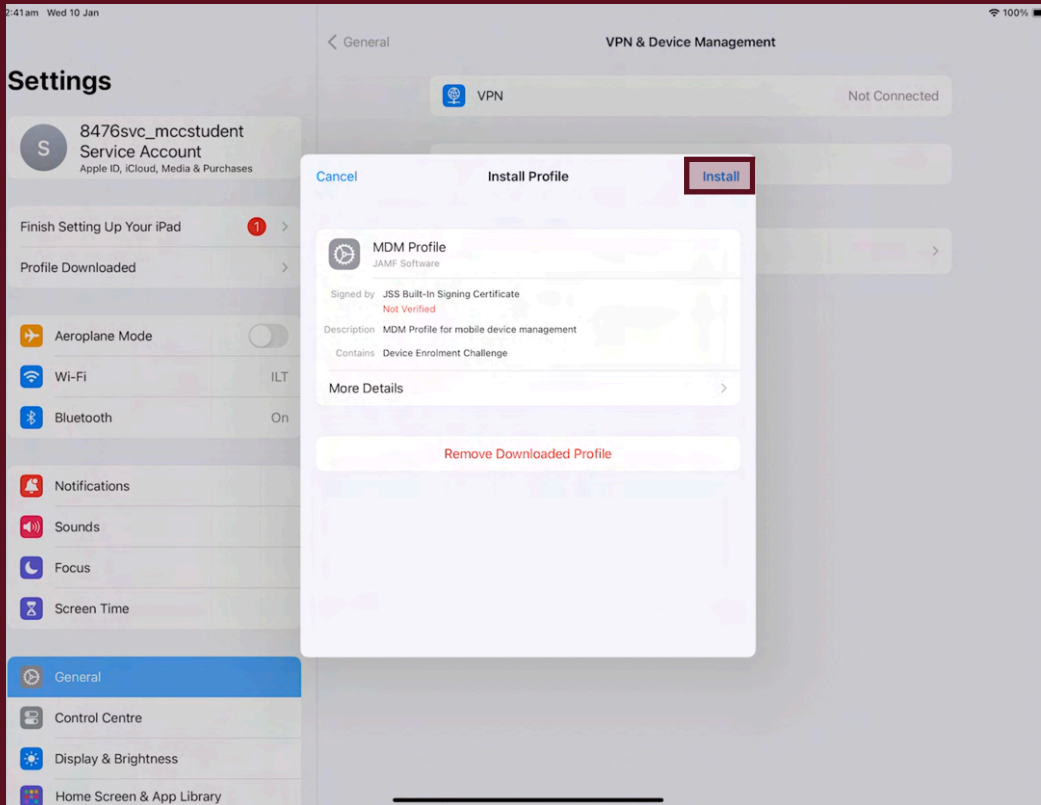


16. Tap “Profile Downloaded”

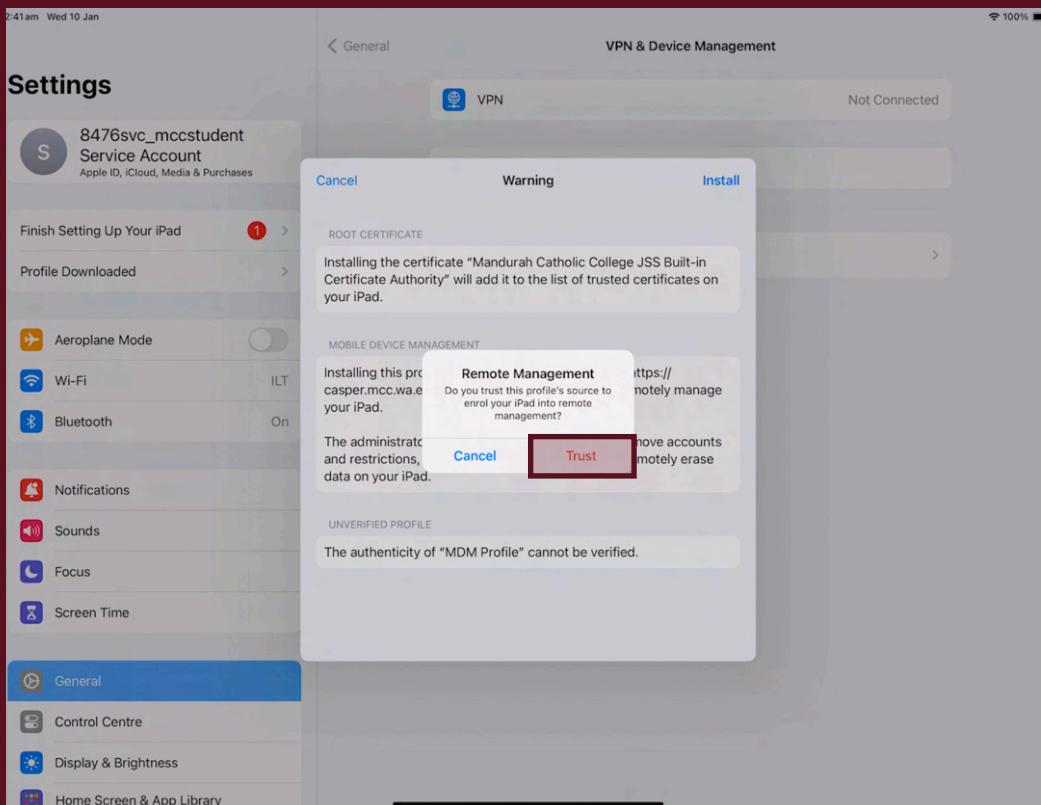


Setting Up Your iPad

17. Tap “Install”. This prompt will appear multiple times.

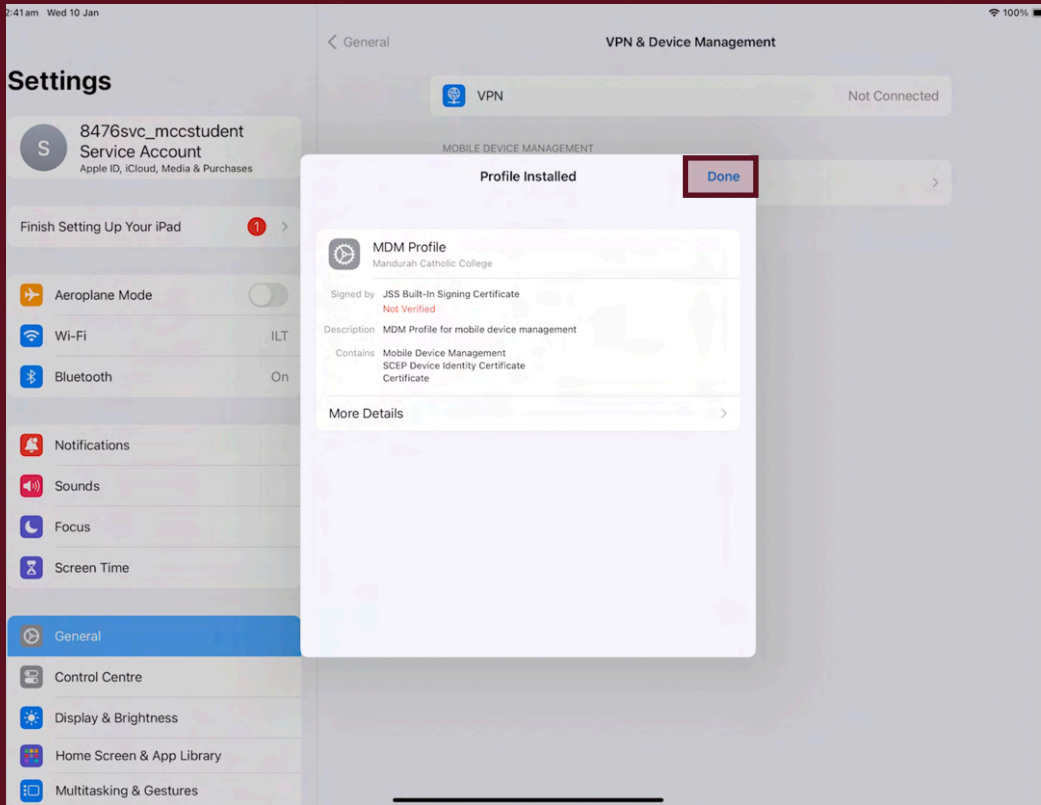


18. Tap “Trust”. You may be asked to enter in your device passcode.

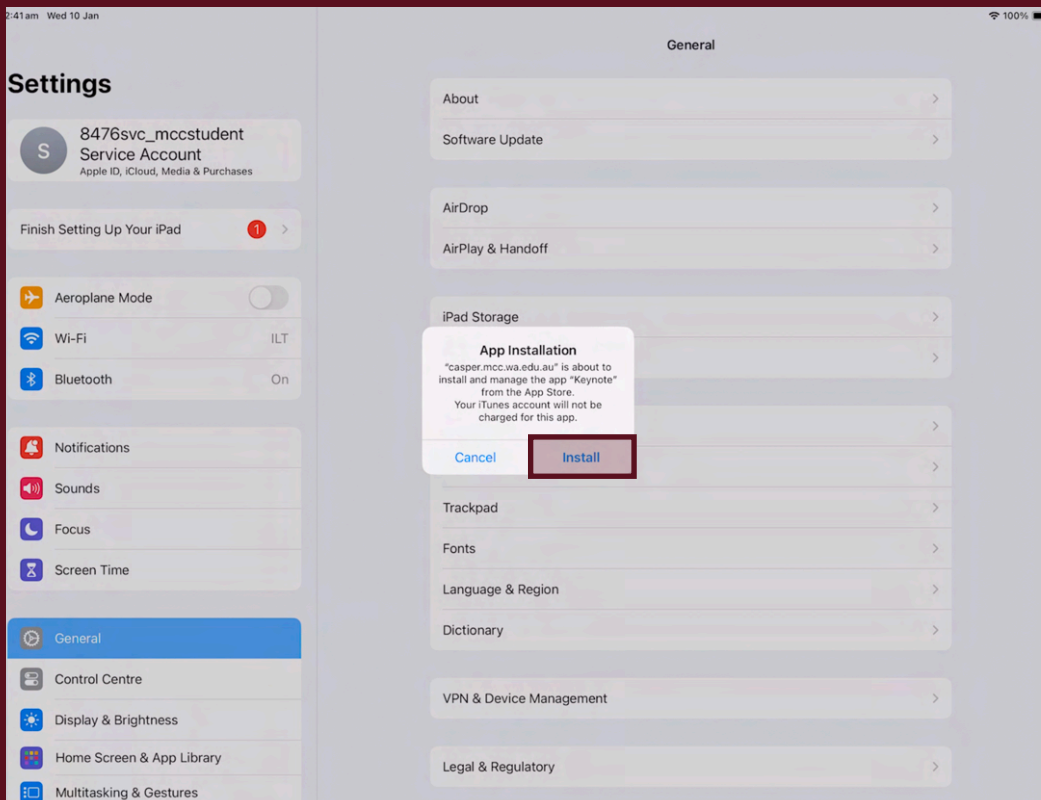


Setting Up Your iPad

19. Tap “Done”.

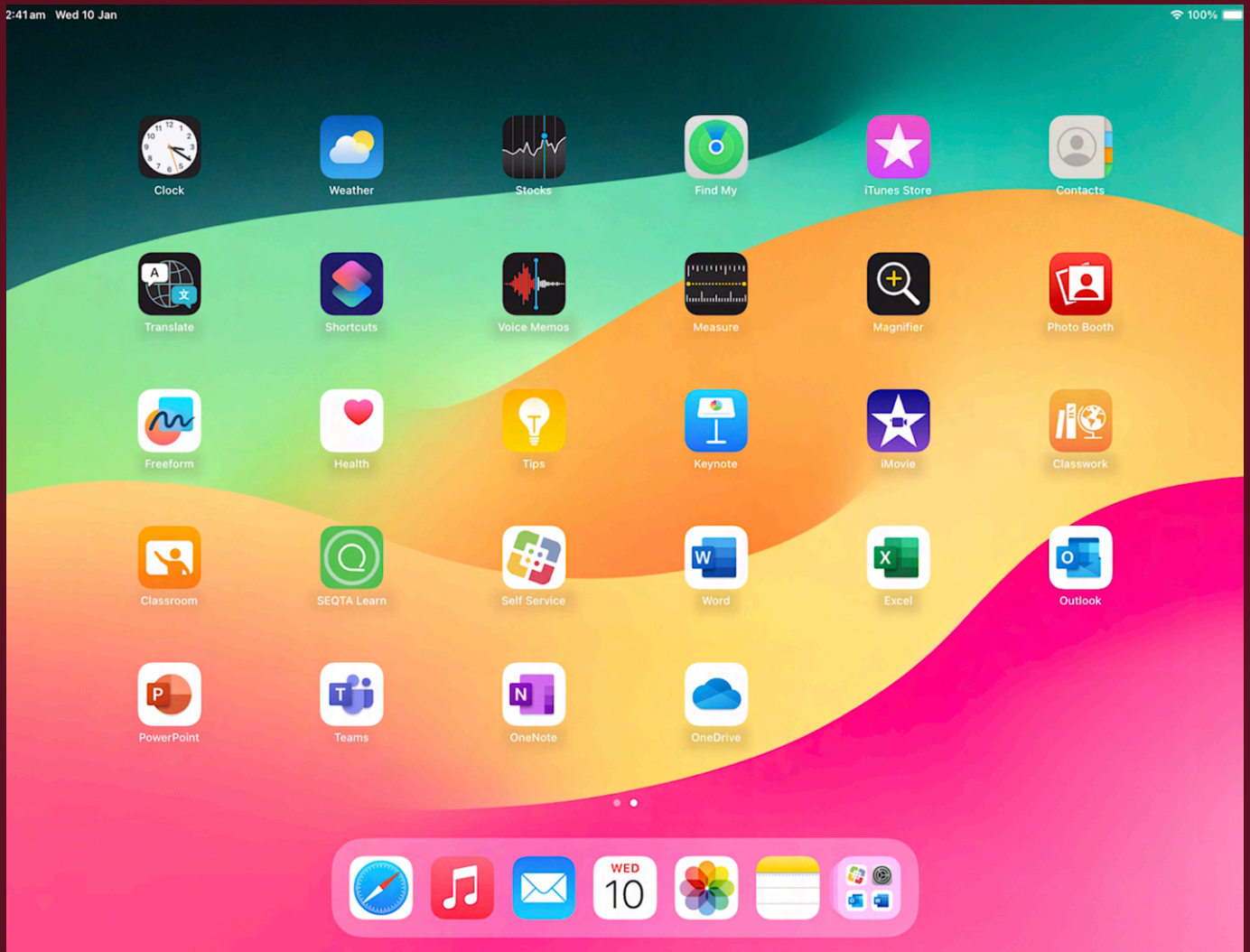


20. Tap “Install” on the prompt that appears. This may take a couple of minutes to appear and will show up several times. This will install the school apps onto the iPad.



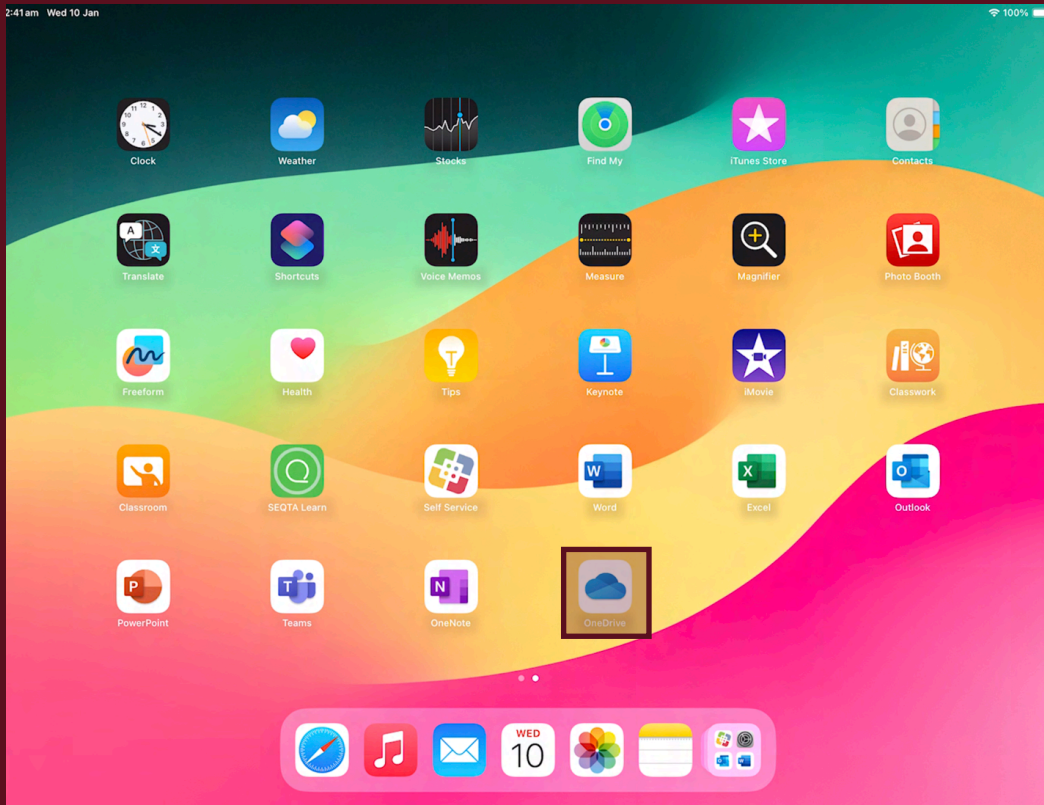
Setting Up Your iPad

Before continuing, ensure all your applications have fully downloaded.

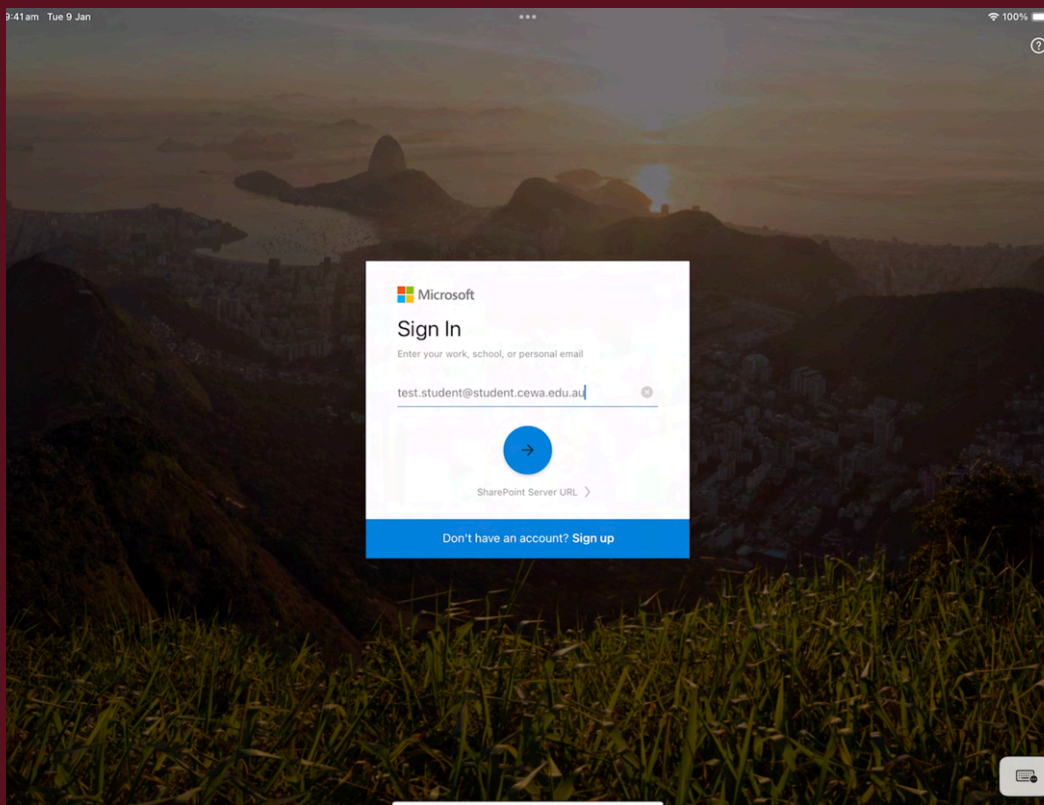


Setting Up Your iPad

21. From the Home Screen open “OneDrive”

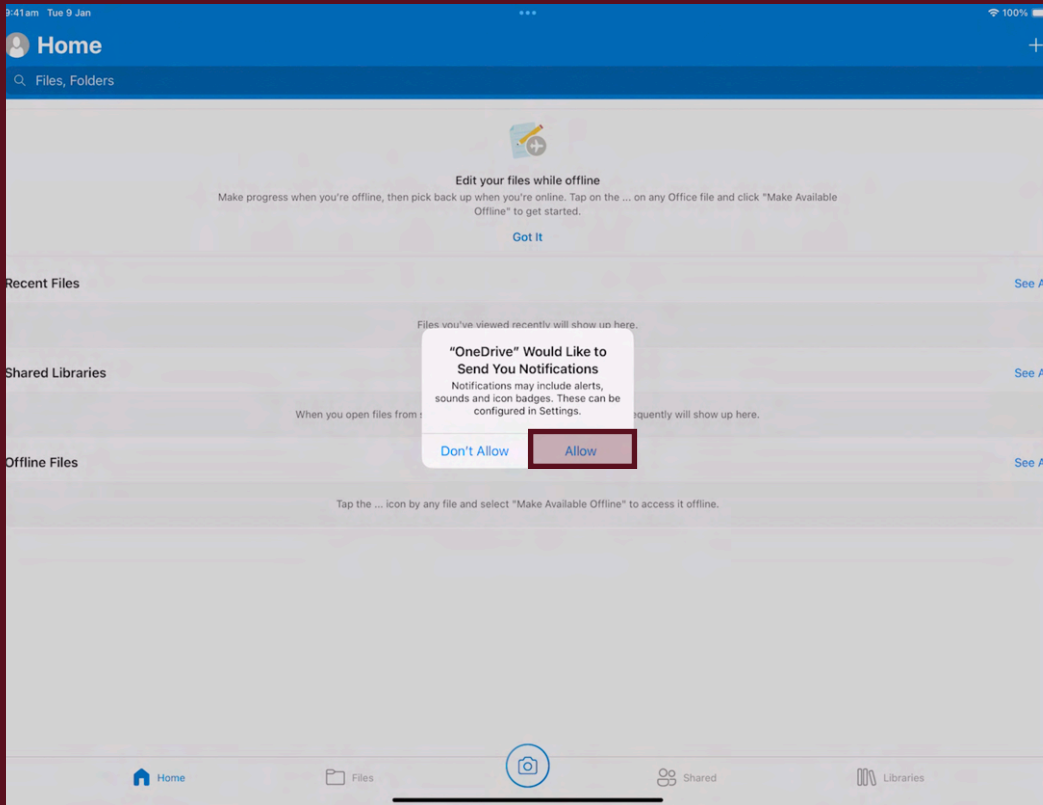


22. Sign in with your CEWA email and password



Setting Up Your iPad

23. Tap “Allow”

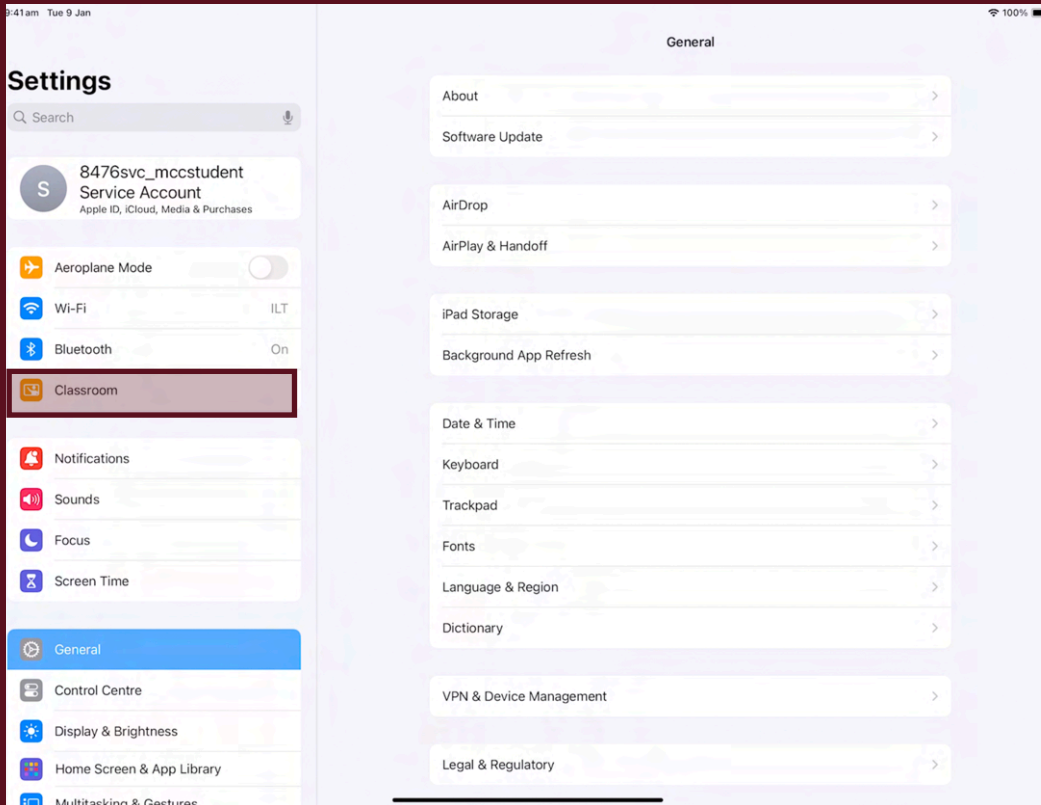


24. Return to the Home Screen and open “Settings”

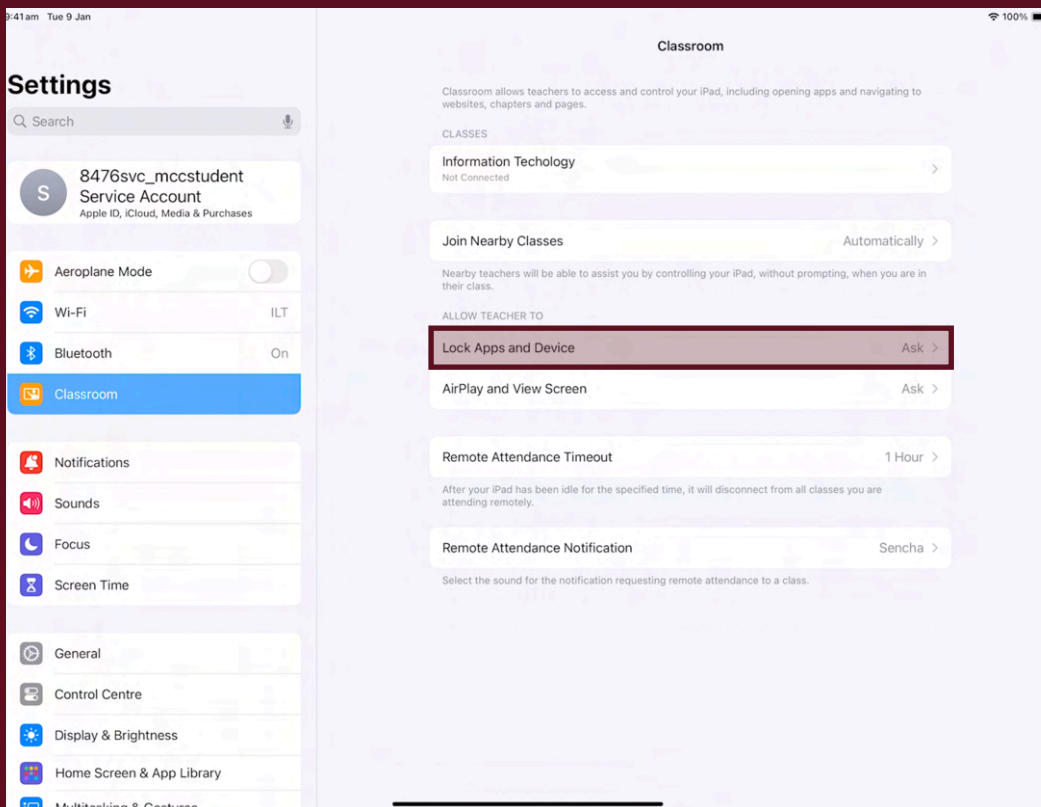


Setting Up Your iPad

25. Tap “Classroom”

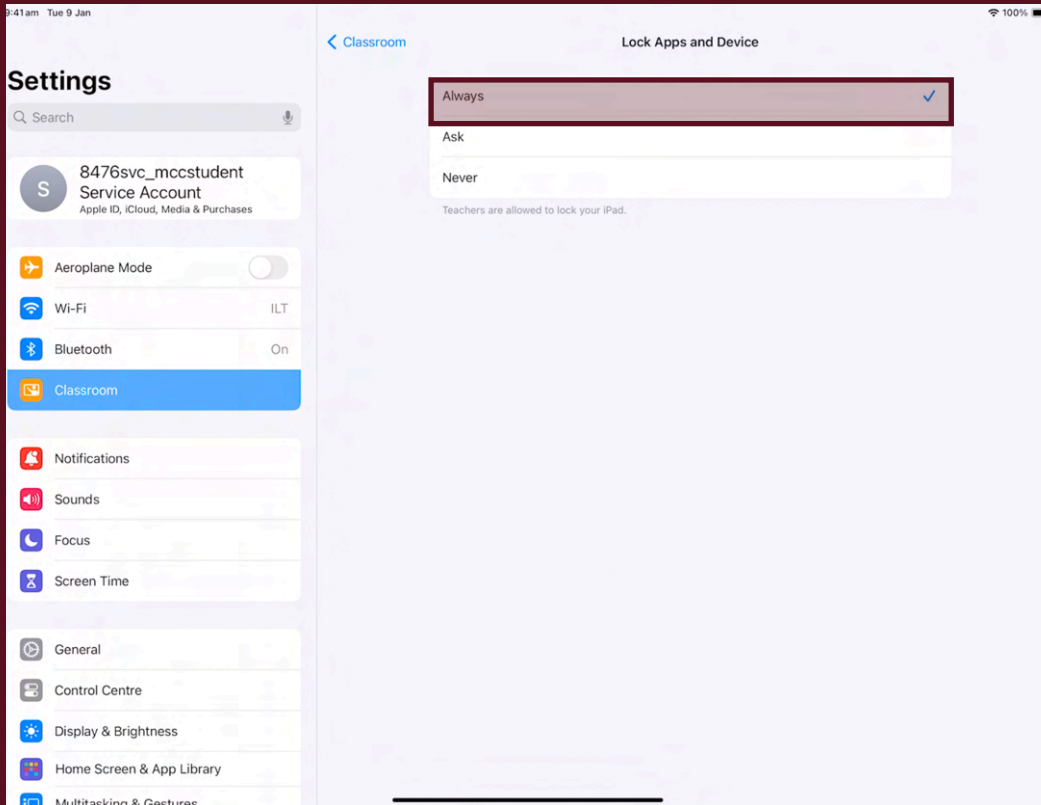


26. Tap “Lock Apps and Device”

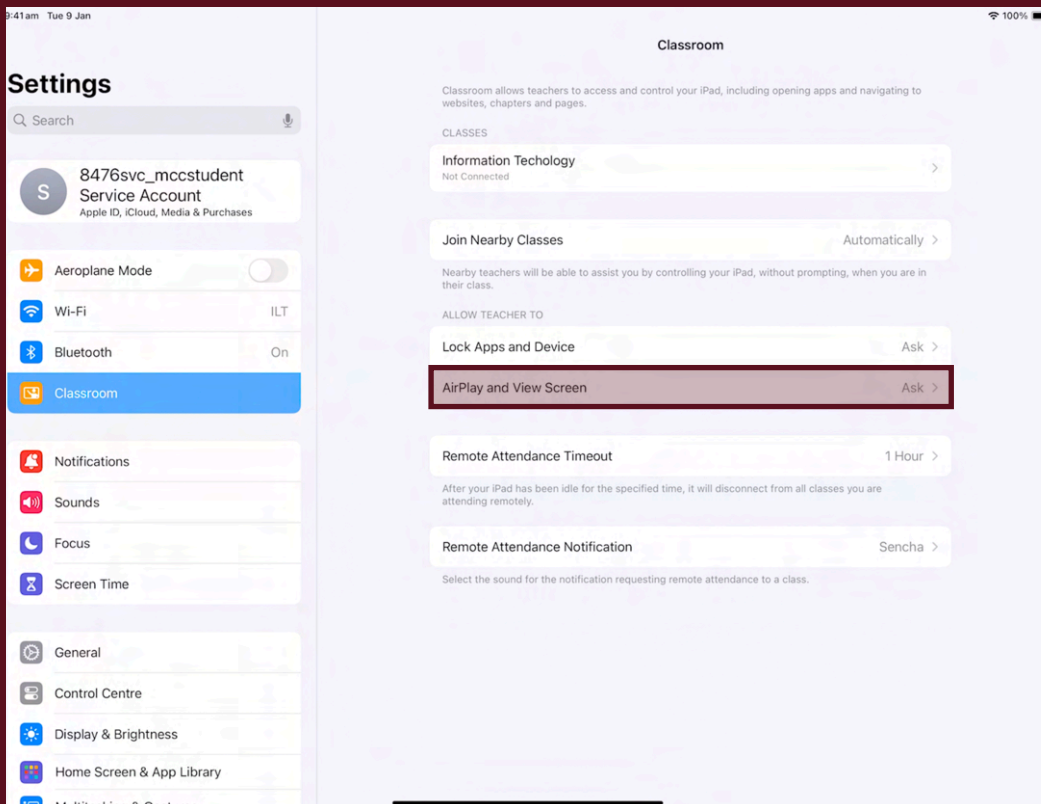


Setting Up Your iPad

27. Set to “Always”

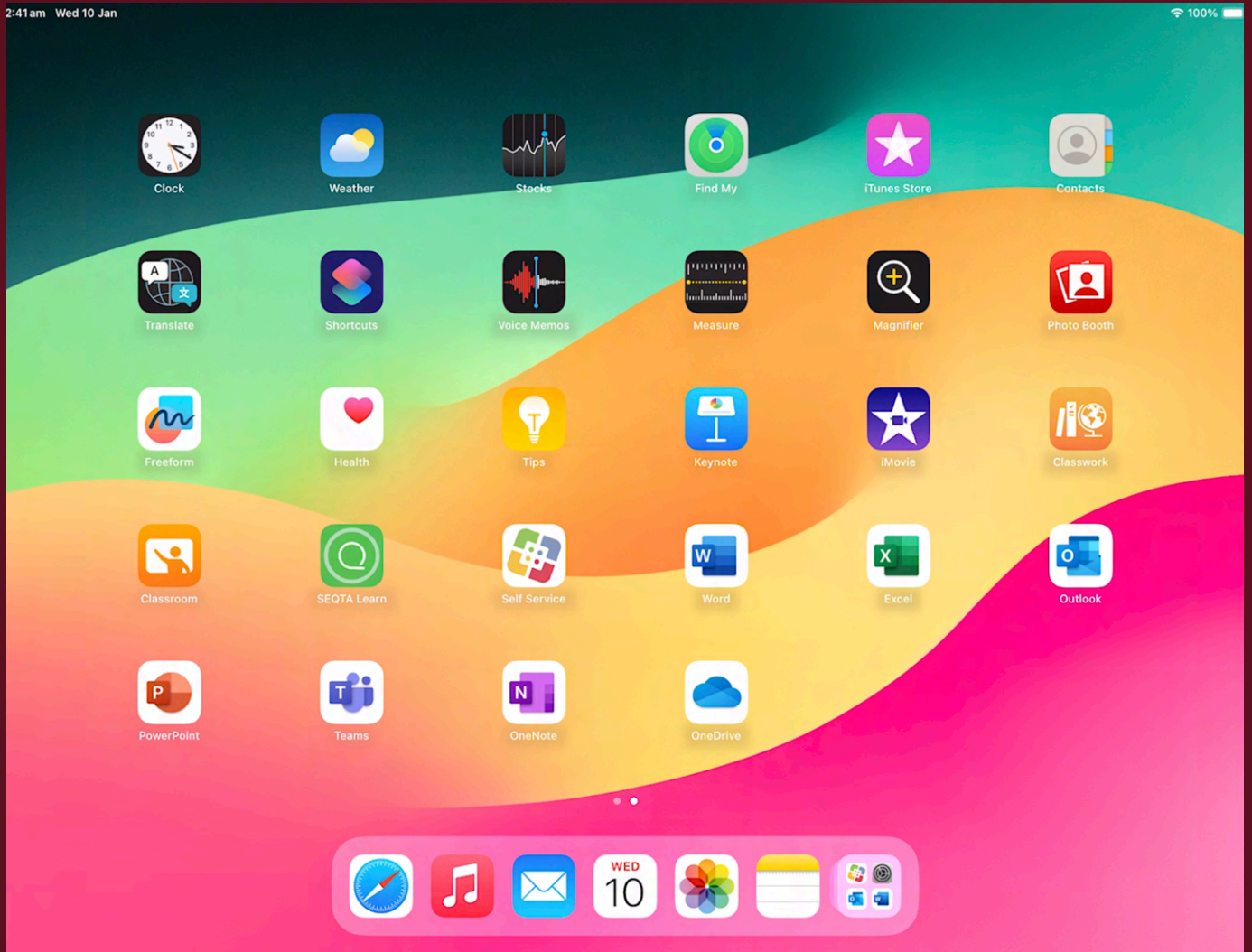


28. Open “AirPlay and View Screen” and repeat the previous step



Setting Up Your iPad

The device is now setup and ready to use.



Setting Up Your iPad



Need help? Email us at: mccilt@cewa.edu.au

